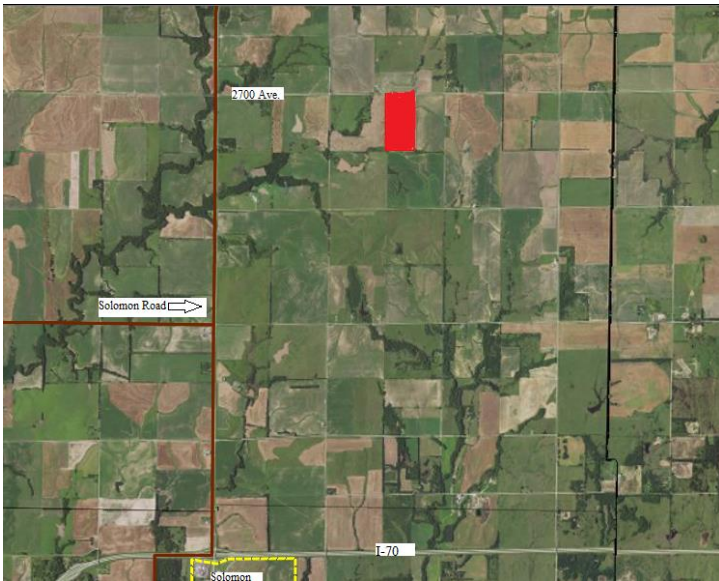


SOLD!!

\$390,000.00

REAL ESTATE AUCTION
LOIS J. SANDERS-CHENEY ESTATE
 APPROXIMATELY 80 ACRES OF FARMLAND
 00000 2700 AVENUE, SOLOMON KS
 AUGUST 26, 2021, 7:00 PM



West ½ of the NE ¼ of Section 29 Township 12 Range 1 East of the 6th PM – Approx. 78.8 acres

Farm ground is leased to Dan Reynolds, tenant farmer for \$4,000.00 annual cash rent through 2022.

Buyer will receive 2022 rental payment
 Buyer will take possession of the ground following wheat harvest, summer of 2022.

Mineral rights will be retained by the Seller.

2020 Dickinson Co. Taxes: \$685.10

Terms of the Sale: 10% down day of sale with balance due at closing. Kansas Secured Title Closing Costs and Title Insurance will be split 50/50 between Buyer & Seller



Map Unit Legend			
Dickinson County, Kansas (KS041)			
Dickinson County, Kansas (KS041)			
Map Unit Symbol	Map Unit Name	Acres in AOI	Percent of AOI
3828	Crete silty clay loam, 1 to 3 percent slopes	60.1	74.0%
3844	Geary silt loam, 3 to 7 percent slopes	21.1	26.0%
4673	Irwin silty clay loam, 3 to 7 percent slopes	0.0	0.0%
Totals for Area of Interest		81.2	100.0%